

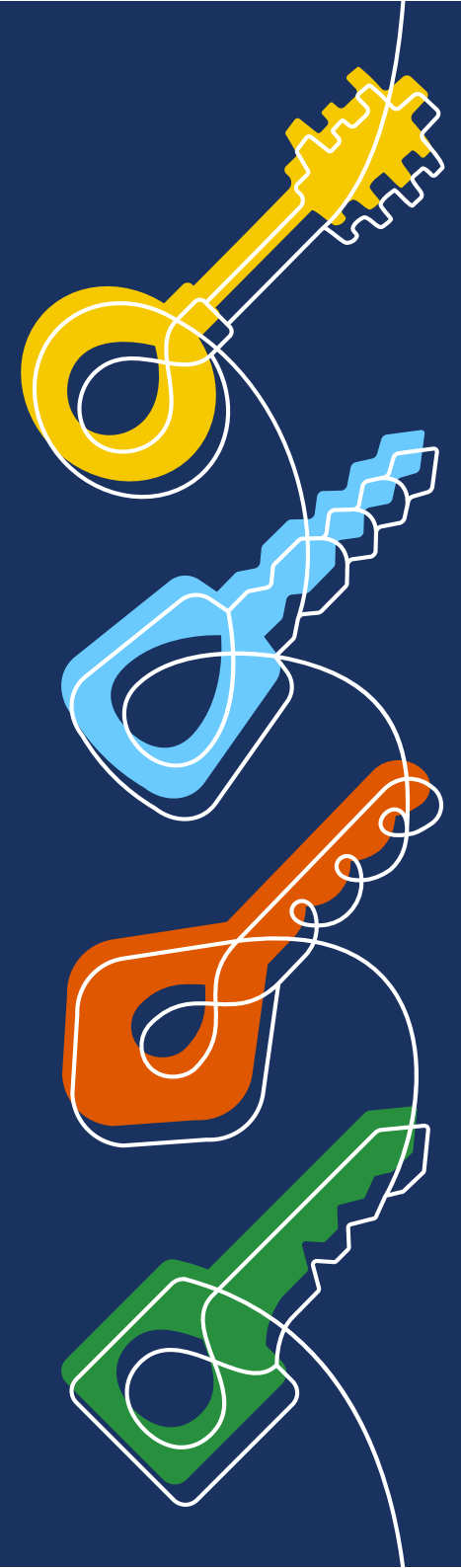


# THE MEMBERS' PATHWAY

---

## INTRODUCING ACCESS KEYS TO NAVIGATE THE MEMBERS' PATHWAY

*Attracting Members - Growing Lodges*



# INTRODUCTION

This document contains the keys (links) to access:

- Level 2 Quick Start Guide
- Level 3 **PLAN**, **ATTRACT**, **ENGAGE**, **RETRIEVE** Guides

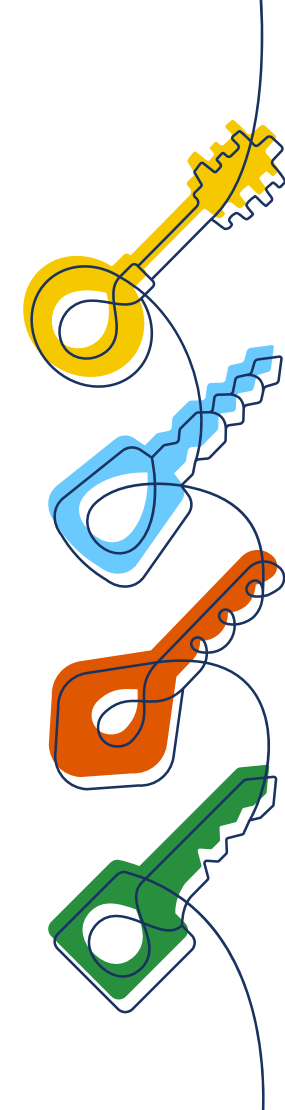
The 'Keys' are single page hyperlinked access documents to all the Members Pathway detail on  [b.ugle.org.uk/membership/members-pathway](https://b.ugle.org.uk/membership/members-pathway)

**The aim is for you get to what you want with one click!**

The allocation of Lodge Officers to particular keys, is only a suggestion and should be adjusted to meet the needs of your Lodge Membership Team:

- ▶ **All Officers and Members –The Level 2 QSG**
- ▶ **LMOs –Level 3 –PLAN and ATTRACT**
- ▶ **Mentors –Level 3 –ENGAGE**
- ▶ **Almoners –Level 3 –RETRIEVE**

**Before using the keys you should attend a relevant presentation –ask your PPO**



**THIS IS AN INTERACTIVE DOCUMENT,  
YOU CAN CLICK ON LINKS AND FILES  
TO ENGAGE WITH THE CONTENT**

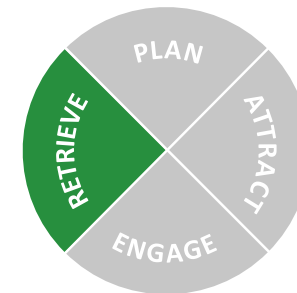
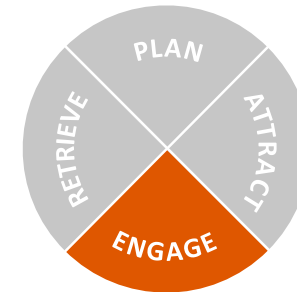
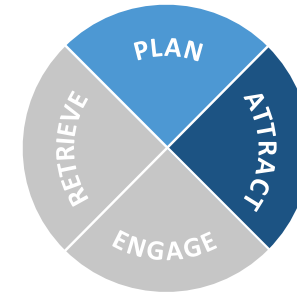
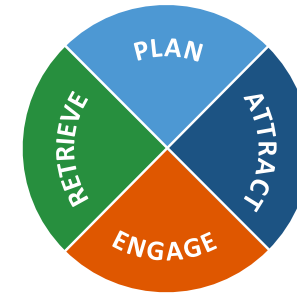
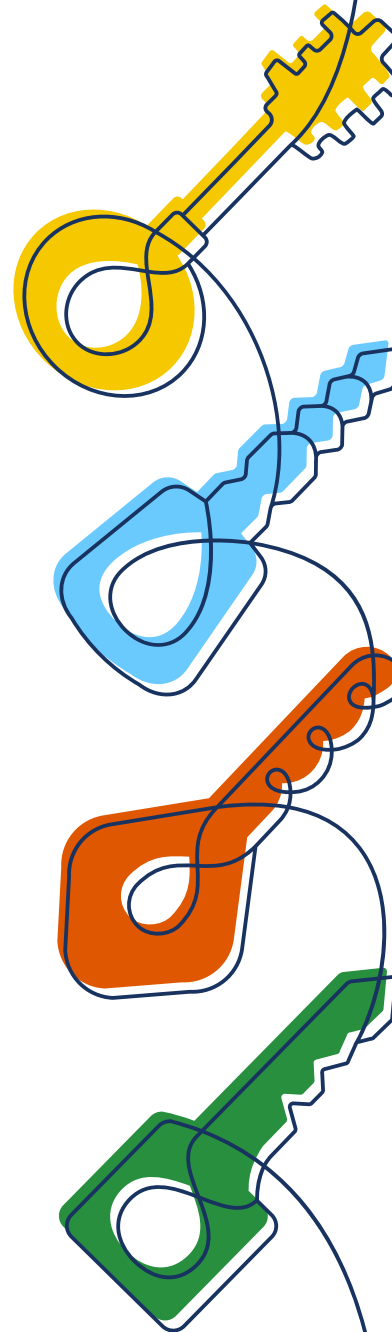
# SET OF KEYS

MASTER KEY

LMO

MENTOR

ALMONER



# LEVEL 2

## Quick start guide

Level 2 provides an extra level of detail to the elements, known as threads.

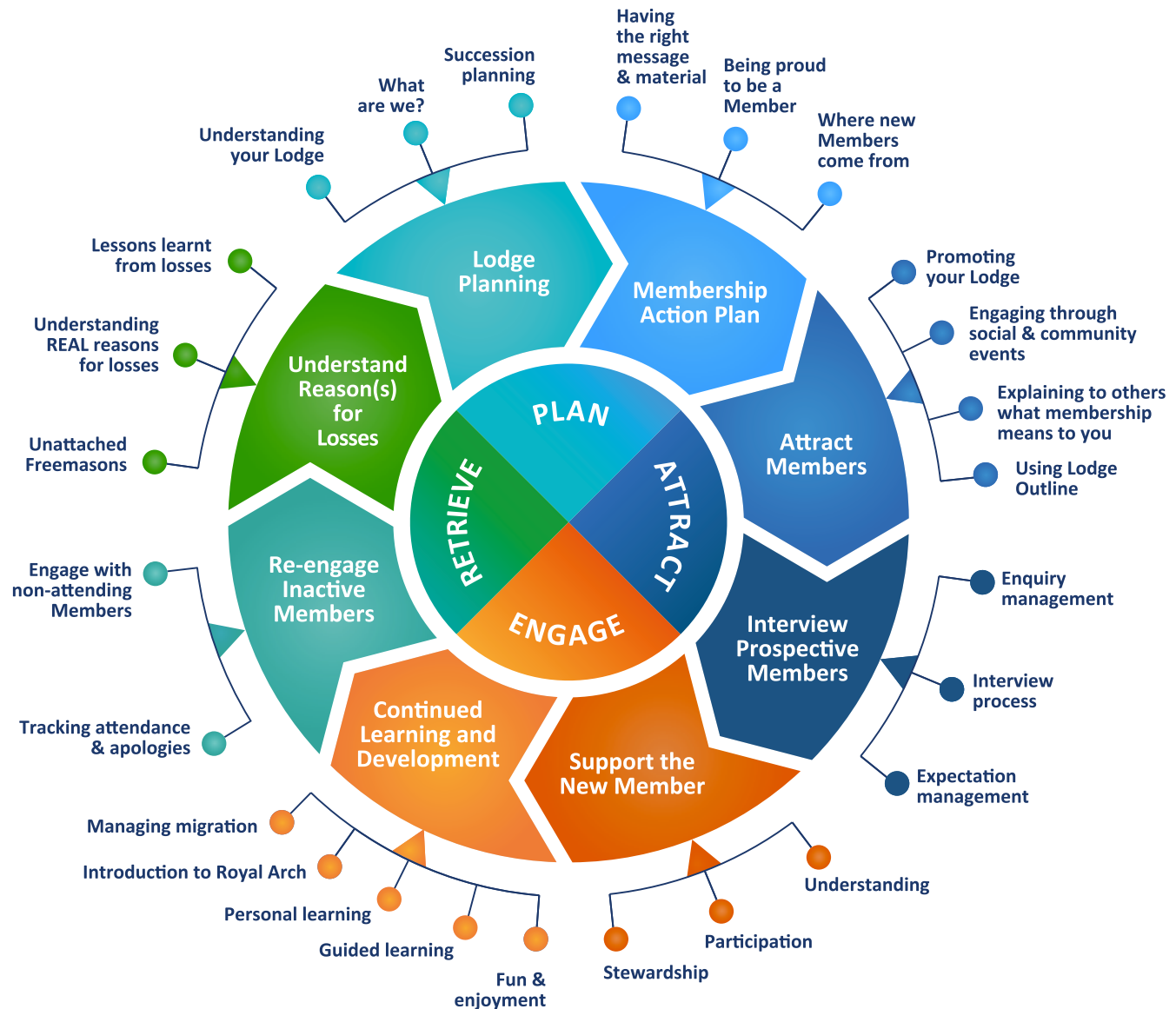
Explained further in the  **Quick Start Guide**

There are two formats of this document.

- A **Hardcopy** which provides a colourful read
- A **Softcopy** which contains hyperlinks to related documents.

For those requiring a quick access to very detailed example, checklists or templates the threads are further expanded into all the component documents held on  **b.ugle.org.uk**

These are called the Level 3 Guides and are accessed directly by using the relevant set of Keys which will now be explained



# LEVEL 3

## A guide to using this document

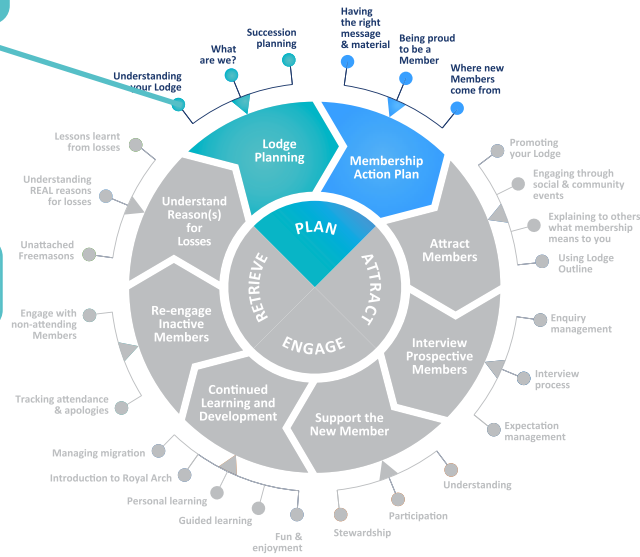
- This is the **Level 3 single page access key** to all the relevant details in each of the Threads within each section.
- The start of the thread is shown in the coloured boxes like this **Clicking on any of these items reveals the detail for the item shown.**
- The lines between the elements show you how each document relates to the others. These can be accessed by clicking on the white boxes like this
- The click through documents are mostly one page and at most three pages long
- After reading an item close the tab before clicking on another item.

Understanding your Lodge

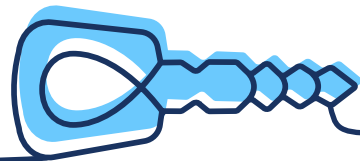
Example questions for reviewing your Lodge

Values questionnaire

Time & cost commitments

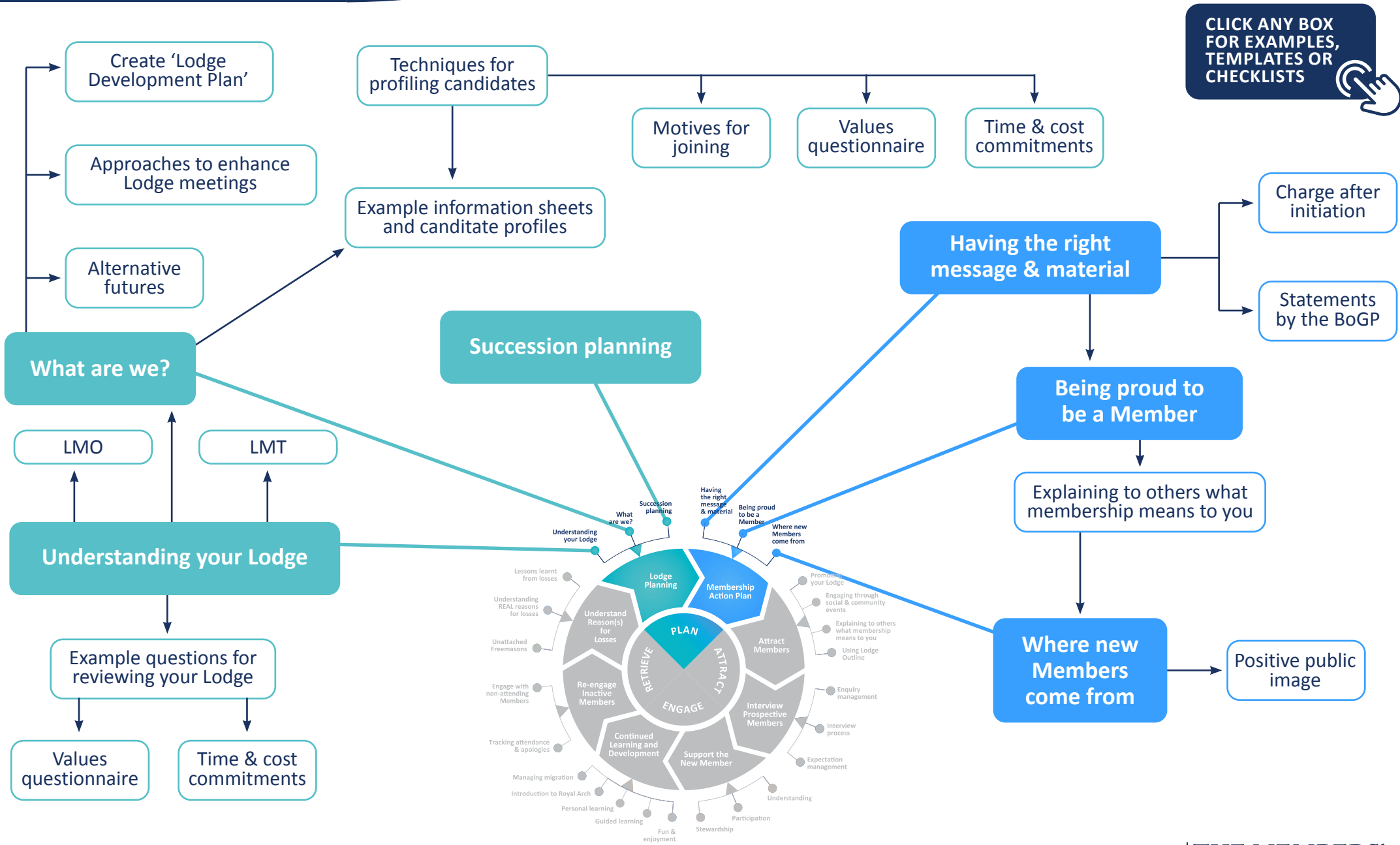


# LEVEL 3

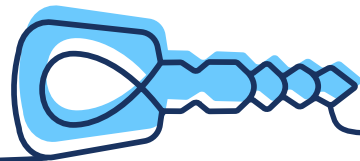


## PLAN 'KEY' SUGGESTED FOR LMOs

CLICK ANY BOX FOR EXAMPLES, TEMPLATES OR CHECKLISTS

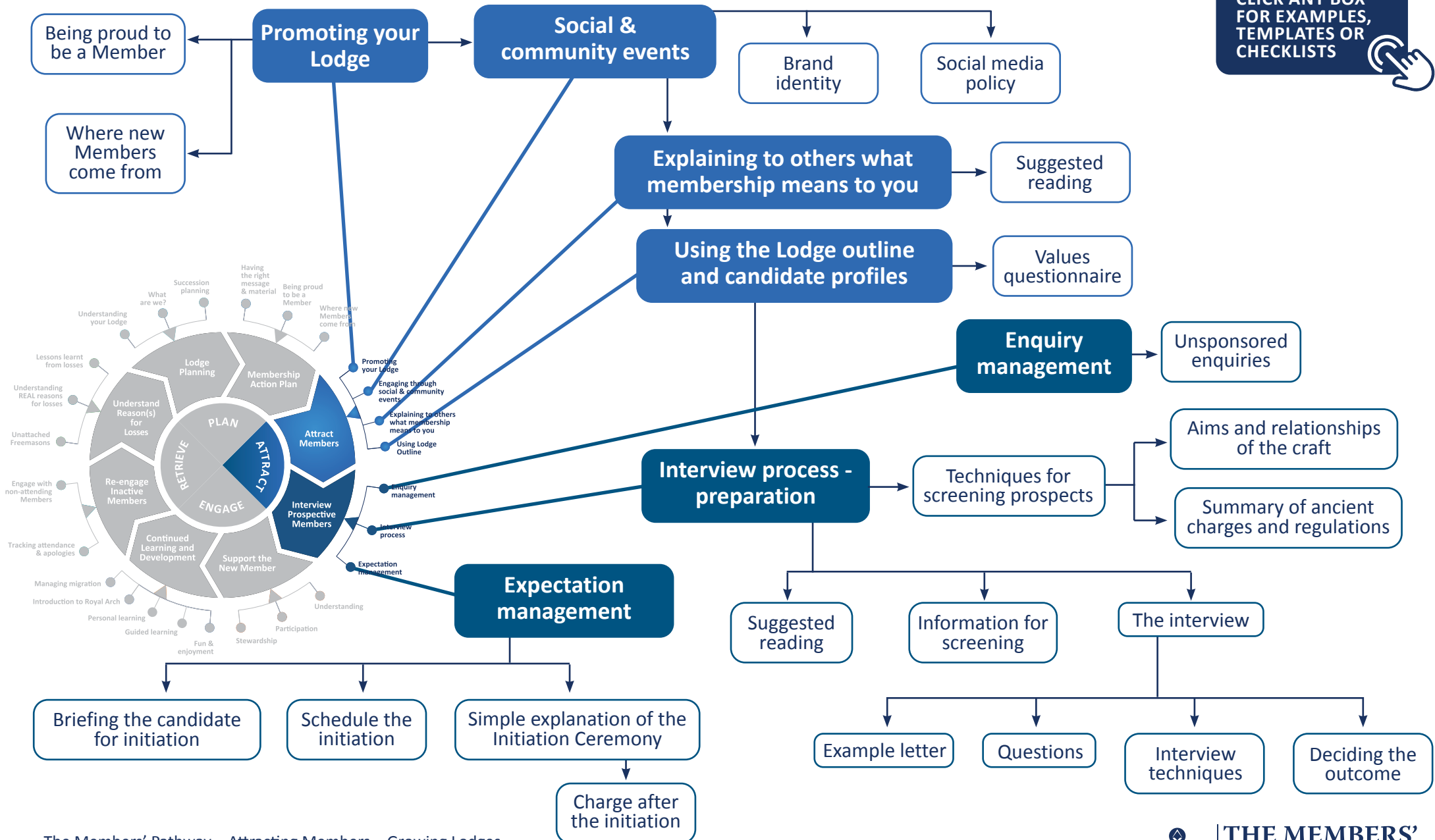


# LEVEL 3



## ATTRACT 'KEY' SUGGESTED FOR LMO'S

CLICK ANY BOX FOR EXAMPLES, TEMPLATES OR CHECKLISTS

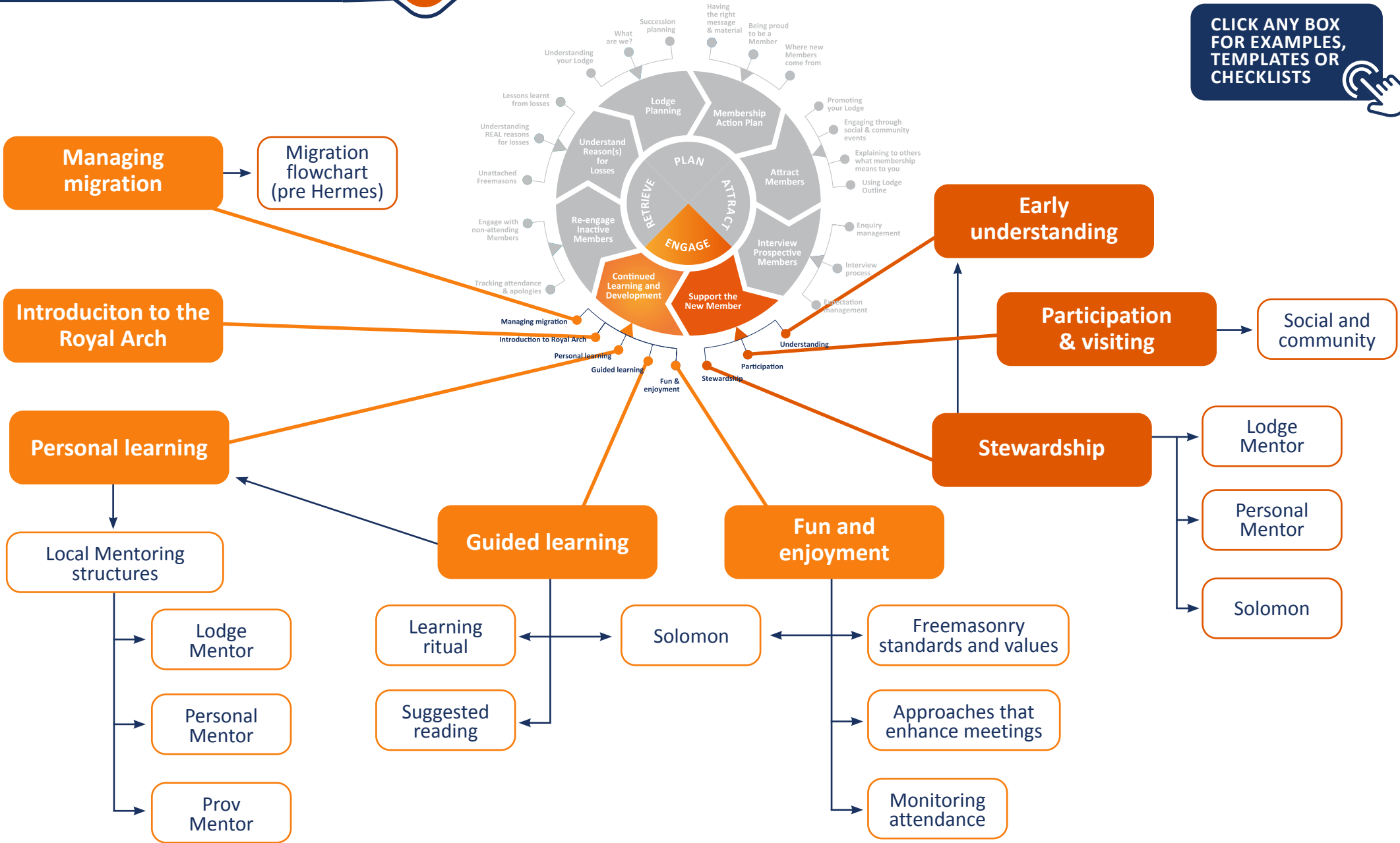


# LEVEL 3



## ENGAGE 'KEY' SUGGESTED FOR MENTORS

CLICK ANY BOX FOR EXAMPLES, TEMPLATES OR CHECKLISTS





# LEVEL 3



## RETRIEVE 'KEY' SUGGESTED FOR ALMONERS

The MCF Almoners' Guide

CLICK ANY BOX FOR EXAMPLES, TEMPLATES OR CHECKLISTS

